



Call for the 11th Annual Meeting of Nano Biomedical Society

11th Annual Meeting of Nano Biomedical Society
“Reconstruction from Giant East Japan Earthquake Disaster and contribution of nano, bio,
environmental technology”

URL: < <http://www.nanobio.jp/> >

Date: Oct. 31(Sat)-Nov. 1(Sun), 2015

Place: Ishinomaki Senshu University
Ishinomaki, Miyagi, 986-8580 Japan

Conference Chair: Nobuyuki HAGA
Professor

Department of Biological Sciences, Ishinomaki Senshu University

The 11th Annual Meeting of Nano Biomedical Society will be held in Ishinomaki, which suffered from East Japan Giant Earthquake and the following Tsunami (big tide wave) disaster on March 11, 2011.

Ishinomaki is now under reconstruction for the revival but daily life is still in severe condition. The city struggles to realize the new society with the full education and high standard of medical care system in the natural environments and the economic zone available for the stable job chances in the future several tens of years.

The meeting aims to seek the role of nano, bio, and environmental technology to contribute to the reconstruction from disaster and set the special symposium open for citizens including students, in addition to the general presentations.

The researchers are welcome, not only from the fields of nano, bio, environments, but also all the other areas ranging from fundamentals to applications.

On the 2nd day, the optional tour is organized to inspect the tsunami-suffered area. This will give you the opportunity to watch the results of disaster, which might be the occasion to reconsider the research, objectives, contributions or voluntary tasks.

The attendance of all the people interested in these subjects and programs is highly welcome.

Schedule

Oct. 31: General session (oral) / Ishinomaki memorial symposium / Banquet
Nov. 1: General session (oral and posters) / Optional tour of the disaster-stricken district by tsunami

Ishinomaki Memorial Symposium (open to citizens and general people)

- (1) Dr. Jiro USUKURA (Professor Emeritus of Nagoya University)
“Do cells also have bone? - Cellular bone”
 - (2) Dr. Yasuo MAEDA (Professor Emeritus of Tohoku University)
“Control of cell differentiation by mitochondria and application for cancer therapy”
 - (3) Dr. Hiroshi KAMEYAMA, Mayor (Ishinomaki city)
“Present status of reconstruction from tsunami disaster and expectations for academic area from the view point of government administration”
 - (4) Dr. Fumio WATARI (Professor Emeritus of Hokkaido University)
“Nanoparticles and their interaction with life activity – shadow and light”
 - (5) Discussions and summary
-

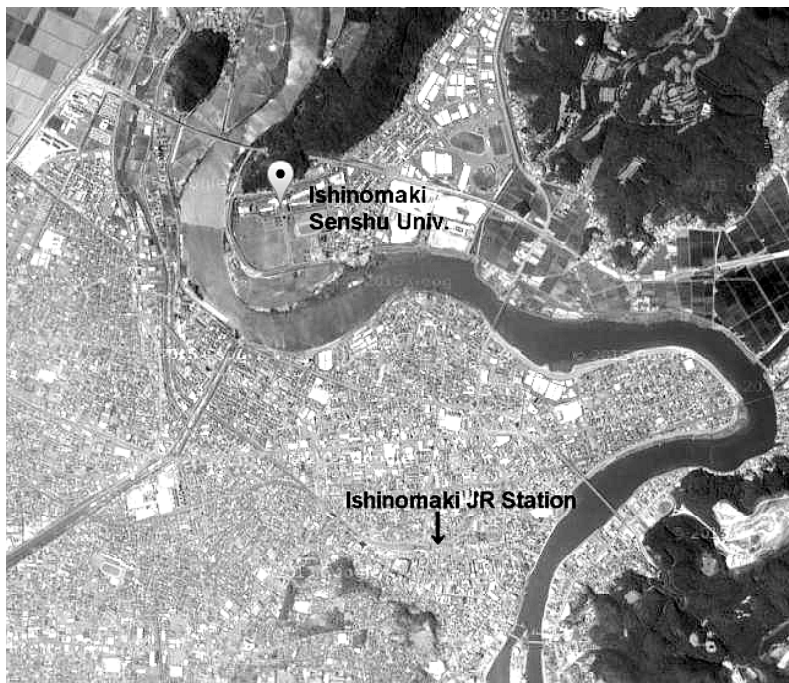
Presentations

Oral: 15 min
Poster: 180 (height) x 90 (width) cm

Registration

General: \ 5,000 / Students (only presenters): \ 1,000
Banquet: \ 5,000
Optional tour: \ 3,000

Access



Ishinomaki Senshu University,
Ishinomaki, Miyagi, 986-8580 Japan

Use of the Shinkansen (the required time From Tokyo station, about 3 hours and 30 minutes)

JR Tokyo station	Tohoku Shinkansen line About 2 hours → →	In front of Sendai station	Express bus About 1 hour and 30 minutes → →	In front of the Ishinomaki Station
	Tohoku Shinkansen line About 2 hours → →	JR Sendai station	Senseki-sen Senseki northeastern line From about 52 minutes, 1 hour and 30 minutes → →	JR Ishinomaki Station

From Sendai Airport, to Ishinomaki, (the required time About 1 hour and 30 minutes)

Sendai Airport	Sendai Airport access line About 30 minutes → →	In front of Sendai station	Express bus About 1 hour and 30 minutes → →	In front of the Ishinomaki Station
	Sendai Airport access line About 30 minutes → →	JR Sendai station	Senseki-sen Senseki northeastern line From about 52 minutes, 1 hour and 30 minutes → →	JR Ishinomaki Station

Attendance/Presentation Submission

Describe and send the followings in E-mail with the title "11NBS Registration"
to haga@isenshu-u.ac.jp
(Deadline: Oct.10, 2015)

1. Name:
 2. Affiliations:
 3. Address:
Postal code:
Address:
Tel:
Fax:
E-mail:
 4. Presentation style:
1) Oral 2) Poster 3) Either is Ok 4) No presentation
 5. Banquet: (Attend?) Yes / No
 6. Inspection tour of tsunami disaster district: (Attend?) Yes / No
 7. Abstract (MS Word file in doc/docx): A4/1 page in Japanese or English
(use the template downloaded from Home Page <http://www.nanobio.jp/> and send as
attachments in E-mail)
-

Inquiries:

Prof. Nobuyuki HAGA
Ishinomaki Senshu University
Department of Biological Sciences
Ishinomaki, Miyagi, 986-8580 Japan
Tel: 0225-22-7716, Fax: 0225-22-7746
E-mail: haga@isenshu-u.ac.jp
